



# WEAR ABLE ART

*Mandurah*

*2018  
Showcase  
Program*



# Message from David Templeman MLA



Wearable Art Mandurah was introduced in 2011 as part of the Stretch Arts Festival. Since then the event has grown from a small designer show featuring 18 garments to become a major event, culminating in a full length theatrical showcase and exhibition. Year after year it produces magnificent pieces of art from not only our wonderful local artists but receives entries from across Australia and internationally.

Wearable Art Mandurah is more than a competition, it builds capacity through workshops, showcase events and exhibitions of works. Stories are shared, connections formed and skills developed through participants' creation and presentation of wearable art. This event enables and encourages new ways of viewing the world through thought-provoking works of art for the body.

As Local Member for Mandurah I am proud to be a part of this wonderful event and I acknowledge all who work passionately to bring such a wonderful culture and arts activity to the Peel region.

**Hon. David Templeman MLA**

**Member for Mandurah, Minister for Local Government; Heritage;  
Culture and the Arts, Leader of the House**

# Message from the Mayor



Welcome to the 2018 Wearable Art Mandurah Showcase.

From its humble beginnings as part of Mandurah's local Stretch Arts Festival, Wearable Art Mandurah is now recognised as the premier Wearable Art event in Australia, and we're so proud to be sharing it with you once again.

In 2018, this home grown event continues to demonstrate its unique place in the creative landscape of both our community and Australia. We're delighted to have received a record number of entries from far and wide, each design with its unique story to tell.

I'm also particularly proud of Wearable Art Mandurah's international recognition, including its inclusion as part of the curriculum of the Beijing New Talent Academy.

A special thank you, of course, to the Wearable Art Mandurah sponsors and supporters, including staff, volunteers and partnering organisations who have worked tirelessly to make this year's event come to fruition.

Our City is proud of its emerging story of culture and creativity, and we invite you to immerse yourself in this year's showcase.

**Rhys Williams**

**Mayor, City of Mandurah**

# Message from the Artistic Director



We need only look at the international impact of wearable art to appreciate the influence Wearable Art Mandurah has on this burgeoning art form.

Each designer, with their intangible philosophy, challenges us to see art, fashion and design in a refreshing and significant new way. It has been a privilege to work with these spectacular garments in the development of our 2018 showcase.

I give my thanks to an incredible cast and crew who have poured their efforts into delivering a beautiful showcase. Some, like me, are new to the world of Wearable Art Mandurah, others bring a wealth of experience which has been so generously shared and much appreciated. Collectively, we wish you an unforgettable Showcase experience.

**Bernie Bernard**

**Showcase Artistic Director**









# Skrydstrup Woman

**Jodie Davidson (WA)**

**Carmel Ryan (NT)**

**Cheryl Bridgart (SA)**

**Bronwyn Packwood (NT)**

**Stephanie Reynolds (Tas)**

**Sue Girak (WA)**

An artefact of history and a mystery to inspire the creative imagination.

In the preserved body of Skrydstrup Woman, a young Bronze Age woman, buried with markers of status and privilege, there is a wealth of knowledge.

Textile treasures found with her link the past and the present, a journey back to the origins of our textile history.

However, for all the knowledge gleaned from her material artefacts, there are many unanswered questions about her life.

Her journey is recreated and retold by six artists, who dream her memories and bring them back to life through cloth, thread and stitch.

This progressive garment was conceptualised by Anzara Clark (Project Manager).





# Metallic



## Carmel Ryan

### NetGlitz

“and the Golden Globe goes to” ..... A play on words references the leading internet television network. 24/7 streaming making us a nation of binge watchers, while the by product, ‘Tinsel Town Divas’ are created, worshipped, emulated and preyed upon.

All that glitters is not gold.



## Deb Hiller

### Metal Maiden

This artwork uses armour to represent the strength and courage of women.

The umbrella skirt indicates the shelter and protection given to others. The mirrored sphere is a reflection of the inner self hidden behind this armour. Soft pliable material was used to make it resemble metal.



## Jacq Chorlton & Julie Smith

### Unbeaten

She is a Warrior, she is a fighter with skill and passion. She is a spiritual warrior, her tough exterior just an illusion. She is a mother, a wife, a nurturer.

She is a force to be reckoned with but when all else fails she lays a mean Christmas table.



## Jennie Abbott & Lyn Nixon

### The Bird Cage

Throughout history metal has been used in garments to restrain and control women. ‘The Bird Cage’ explores the feminine juxtaposed with entrapment. The straight jacket speaks of the attempts to restrain women, whilst the shiny, steel like organza ‘cage’ infers the enslavement of women.



## Suzette Darcey

### LacusCurtivs

The earth gives up all of its secrets in the colours of minerals.

They are transformed, enabling us to enjoy them with such glitz and glamour.

LacusCurtivs is created in all its glory capturing the dazzling essence of life.



# Metallic



## Eugene Smalberger

### Galactic

The artwork is galactic as a heat shield and modesty layer, the spiralling flimsy aluminium against the rough metal bra is both incongruous and harmonious bringing forward the beauty of the female body, with hundreds of metal shields guarding her from exterior forces.



## Lynn Kennedy

### Ironland

Dedicated to the dramatic iron rich gorges of Karajini National Park and the dominant pindan tones of the Pilbara, copper wire was sculpted to represent the metallic walls of the deep gorges. Tranquil rock pools were created with coloured resin and photographic images symbolising the ancient banded iron rock formations.





# Transformation



## Boroka Kis

### The Sorcerer



This wool-felt mask is a tribute to the stone-age sorcerers and to ancestors who were excellent felt-makers. They reached new lands by chasing the Magical Stag, whose antler was the Tree of Life, among its branches eagles were nesting to bring the reborn souls back to earth.

## Fiona Harper-Harwood

### Evolutionary Woman



From micro to the infinite Big Bang Force is our inner compass of optimistic, joyous, expressive spirit, for I am the stars, fire, earth, water, the air. I am Evolutionary Woman, the magical feminine creator, who flows with alpha resonance, truly woven into the natural fabric of the World.

## Michelle Murphy

### Mirabilia



A collection of everyday objects transform into a floral landscape. Buds grow from cotton tips, seed pods of beads flourish below a fruit bowl. Manipulated fabric, crystals and deconstructed jewellery blossoms combine with feathers, nuts and paperbark, visually linking man made with nature.



# Transformation



## Elizabeth Morley

### Takes Grit

Rocks, pounded by waves, break down to grit and sand, a grain of which can lodge in an oyster causing great discomfort.

In defence, layer upon layer of nacre are secreted encasing the irritant, which in time grows to a pearl, magically transforming pain to a lustrous gem.



## Ellen King

### Nature Nurturing

The weedy seahorse shields a clutch of eggs, he is protective and safeguards them till they hatch and are released into the sea. A transformation from protection to independence. Our environment is fragile just as the seahorse created shelter and protection for his brood we too as a society need to nurture nature.



## Jacq Chorlton

### Sky and Water III

Based on M.C. Escher's woodcut print, Sky and Water I, this artwork has been created as an homage to the Dutch painter.

Using old black corflute packaging and used printers' aluminium plate to resemble the birds and the fish that transform into each other.



## Jo Court

## & Sarah Walker

### Deception: A Love Story

This is a tale of a conspiring orchid and a hood-winked wasp - the hammer orchid and its unique pollination by the thynnid wasp is told in Deception: A Love Story.

The artists have created an interpretation of the hammer pollinating the wasp through the use of cane, wire, knitting and other fabric techniques.



## Jude Tupman & Marie Gallin

### Patches Off

Celebrating the transformative, life changing work of the Fred Hollows Foundation with the 'patches off' moment after eye surgery.

Symbolically, the headpiece depicts eye surgical instruments, the dark back view, poor vision and the brilliant contrasting front, renewed sight

Detail inspired by Benoit Mandelbrot's expression of nature's mathematical transformations.

# Avant-Garde *presented by Onyx Hair & Beauty*

## Alina Stanila (UK)

### Time Travel



The boundaries of modern textiles and knitwear technologies are pushed in an ambition to create 'modern couture'. The extravagant aesthetics combine traditional garment making techniques with a conceptual approach, each garment is designed and engineered using traditional and innovative textiles and yarns.

## Antoaneta Tica (Romania)

### Are you Thirsty?



Inspired by nature, this work reflects an approach to life, interrogating the relationship between human beings, nature and evolution through art, costume and performance. Old materials are revived, transforming them through specific techniques that give them new meanings.

## Larissa Murdock

### Gaiascope



Illustrating Earth and the ecosystem co-existing with humankind. In an ideal world people support the fragility of biodiversity and maintain harmony in the natural world which is infinitely less fragile than us, but fragile nonetheless.

Made from hemp paper tape, paper straws and Powertex.

## Louise Wells

### Light in the Darkness



When life overwhelms us, it's like a suffocating, dark cloud obscuring our view. Through experience we develop a strength and resilience which shines light and hope into our darkness.

En masse glimpses of colourful silk and satin connected by free machine embroidery form a strong, resilient foundation.

## Melissa Walmsley

### It takes a Village to Raise a Child



Building a village is a significant part of parenthood. Every new mum needs to be surrounded by a village of friends, family and neighbours to support them in their journey.

A child grows from within the village, learning and experiencing new things from each person.

## Sandra Rives

### Mulier-Woman



A woman is an artistic complexity, created to nurture, tempt, attract and complement mankind. "Mulier" artistically represents every aspect of a modern woman. Red, black and gold are all rich colours symbolising her power, desire, sensuality, grandeur and an element of mystery and darkness.



# Avant-Garde



## Diana Kelly

### The Butterfly Collector

Historically, insect collecting was wide spread in the Victorian age, a period where voluminous skirts and extravagant headwear were embraced.

The headpiece represents the butterfly display cases of yesteryear, while the skirt references the nets used to capture the insects, allowing the wearer to become the enticing flower.



## Meagan Howe

### The Masquerade

The Masquerade represents the fashion industry.

The figure is blinded by her own desire for beauty and is oblivious to the true cost of her consumption.

Masks that adorn the garment represent anonymous makers who bear this cost, whose work and lives have been historically undervalued.













# Youth *presented by Reading Cinemas*

## Ava Hart

### Plastic Fantastic



Art + Sustainability + Maths were combined to create a Marie Antoinette inspired costume using recycled materials and plastics. The photoshoot was as important as the construction.

A local drag queen created the makeup followed by professional photography across the city.

## Kiana Murphy

### Life is a Jigsaw



Living with ASD (Autism Spectrum Disorder) this represents how I see the world.

Life is colourful, different and complicated. It's made up of so many elements yet on a daily basis I must connect the pieces of a colourful, loving world and make sense of it.

## Leilani King

### Lupa



Inspired by the wolf who nurtured and cared for Romulus and Remus, one being the eventual founder and leader of Rome. The wolf is a loyal yet mysterious creature, and one of nature's most vicious forces. Common household materials and fabrics encapsulated the nature of the wolf, making an impression with its dark and vicious appearance.

## Rose Fetwadjieff

### Cloudy with a Chance of Tea



Surrealism inspired the oversized scale of the teacups and teapot, and the exaggerated dress form. Saturated colours invoke feelings of nostalgia and childish fun.

The 3D form changes the view from all sides. The base colour creates unity, and emphasises the felt pieces.

## Sophie Lance

### Corvus Anxietatem



This artwork depicts what I and many others experience from having acquired anxiety.

High gloss fabric, feathers, elastic and repurposed hockey shin pads, dowel rods and belt buckles were used to symbolise the hardships that people with anxiety go through.

## Taylor Macdonald

### The Bloom



Flowers and gardens start little, grow and become big and beautiful. It is about how people start little, grow and become big. I am little, people said it would be hard but I did it.

There's a flower for each family member who supported me.



# Youth

## Oceana Piccone

### Morphett'e



Morphett'e is constructed from plastic bags. It revolves around the concept of gender discrimination, it is neither male nor female, it is simply a creature rebelling against conformity.

A being pulled from an idealistic imagination, where boundaries don't exist, where animals and humans are one.

## Dajeong (Jenny) Jang

### Fabricated to Perfection



Many expectations are placed on a bride on her wedding day. Recycled paper contradicts the societal norms of spending ridiculous amounts of money for a wedding not only to please themselves, but more so to please others. Over 1000 white origami roses represent the bride's pressure on her "Perfect" day with the 'whirlwind' feature-like roses creating a sense of chaos.



# Tertiary *presented by WA Fibre & Textile Association*

## Haneen Al-Azzawe

### Forgotten



This artwork is inspired by the harmonic details of Baghdad architecture and tradition, which have been destroyed through war and the passing of time forgotten. The contrast between the front and back views illustrates the difference between the original state and the current decrepit state of all these symbols.

## Jacinta McDonald

### Atrophy of Love



Inspired by the disintegration of the relationship between Romeo & Juliet and developed from a regenerated textile comprised of old discarded novels. The rose is a symbolic representation of their love and its construction of stitching pages together haphazardly to recreate the lovers disconnect and separation.

## Kirsten Springloed

### Star Power



In 2015 a giant puppet girl walked Perth streets, charming all with cheekiness and spirit. Few knew her story - she fell from the stars and could see through time. Star Power considers what drives such a fantastical being....perhaps she is fashioned from toys and powered by a stellar pinwheel....

## Rochelle Peries

### Wild Swans



Inspired by the character Odette, and the intersection of her humanity and swan-form.

The artist examined the interaction between the moonlight human and the sensibility, shape and form of the daytime swan. Heat treatment created a crinkled vein-like effect from discarded plastic bags.

## Debbie Ridley

### Forty Four



Many overseas workers are underpaid and work in atrocious conditions just to complete garments.

When the curtain is drawn back, stripes are revealed to represent a jail and the confinement of the workers.

Awareness needs to be raised on the Fast Fashion Industry, so we can change it.

## Rosie Finucate

### Snowi



Life isn't fair, life continues, life is chaos. Sometimes a tsunami washes you away, sometimes waves carry you to the next destination.

When you are drowning in emotional debris, it is important to take a breath of fresh air and see the beauty in destruction.



# Tertiary



## Paige Liedel

### Still Standing

As a child I visualised the spoken word in its literal interpretation, learning later this was an aspect of my Aspergers Syndrome.

The literal interpretation of "tall poppy syndrome" was my inspiration, initially thinking it meant to cut down the tallest poppy. Now I understand the real meaning.



## Samantha Quealy

### Frame Perspective

Inspired by Picasso's Cubism period this piece is a 3D sculpture of his most famous works. The frame shows that each individual perceives art in different ways.

Embellished with draping, papier maché and wadding techniques to give 3D effect. The frame has been constructed using wood making skills, then treated.



## Alyssa Kay

### Internal Transparency

This artwork comprises recycled cardboard boxes that have been cut down and moulded into a gridded pattern, representing armour.

It was then shaped around a neoprene materialized tunic to form a skin tight suit.









# Categories

## Avant-Garde

presented by Onyx Hair and Beauty Crew

## Metallic

## Transformation

## Youth

presented by Reading Cinemas Mandurah

## Tertiary Student

presented by WA Fibre and Textile Association (WAFTA)

# Special Awards

- Wearable Art Mandurah Artist of the Year presented by the City of Mandurah
- International Award
- TAFTA Inc Award
- First-time Entrant Award
- Creative Reuse Award
- Gillian Kaye Peebles Youth Award
- Powertex Award presented by Powertex Australia
- Tertiary Student Highly Commended presented by WA Fibre and Textile Association (WAFTA)

Wafta is an innovative fibre & textile association serving members throughout Western Australia, Australia and Internationally.

Wafta members create in all areas of fibre and textile arts, participate in studio days, exhibitions, workshops and meeting with guest speakers from around Australia and Internationally.

Join us at [wafta.com.au](http://wafta.com.au)  
[facebook.com/wafta.com.au](https://www.facebook.com/wafta.com.au)  
WAFTA on Pinterest.

Proud Sponsor of the Tertiary Student Award



# AMAZING VALUE



[READINGCINEMAS.COM.AU](http://READINGCINEMAS.COM.AU)

MANDURAH PH: 9535 2800  
[FACEBOOK/READINGCINEMASMANDURAH](https://www.facebook.com/READINGCINEMASMANDURAH)



# Meet the Judges

## Aly May

Aly May has been involved with the fashion industry for over 30 years. Her work has included creating and developing the successful fashion presentation for STYLEAID, and acting as creator and producer of the lingerie show - the highlighted showcase for the Boobalicious Ball, an event that raises funds for breast cancer.



## Ashley Hay

**Artist, Teacher and Wearable Art Designer**

Ashley Hay is a Perth artist who has worked as an art and drama teacher. As a two time finalist of Wearable Art Mandurah, she has been involved with all aspects of the competition including the showcase, campaign shoots, various exhibitions and facilitating the popular workshop Creating Sculptural Form in Wearable Art.



## Diane Binns

Diane is Chair of the Western Australia Fibre and Textile Association, a group with passion, enthusiasm and talent.

Their objective is to increase understanding of the potential of fibre and textiles, whilst maintaining a high standard of craftsmanship. She currently holds a Bachelor of Visual Arts, Adv. Diploma of Fine Arts and a Diploma of Fine Metal Jewellery.



## Isla Munro

**Fashion Designer**

Isla recently returned from two years of working in the fashion industries of Hong Kong, Jakarta, Shanghai and Paris. She recently graduated from Curtin University with a Bachelor in Fashion Design, and is now building her namesake womenswear label, Isla Munro. Locally produced and designed, Isla Munro focuses on modern design and versatility.



## Leisa Landre-Ord

**Associate Head of School for Production and Design and Senior Lecturer at the WAAPA**

Leisa studied stage management at the WA Academy of Performing Arts. She commenced her career with the WA Theatre Company as resident stage manager before moving onto Production Management working with the Perth Theatre Company. In 2001 Leisa moved to WAAPA as the Head of Stage Management, and in 2009 became the Associate Head of School for Production.





# Meet the Judges

## — Lisa Piller

Lisa Piller is the Discipline Leader for Fashion Business at South Metropolitan TAFE, and has more than 16 years of industry experience working in fashion product design and development.

She is heavily involved in creative conceptual design and development for large fashion installations, including presentations for Perth Fashion Festival, and the SM TAFE Graduate Fashion Show.



## — Lesley Wilkinson

Lesley has held senior management positions in local government, aged care and disability services in WA, operated her own consultancy, and lectured for the Masters of Leadership and Management. She holds a Master of Leadership and Management and has undergraduate and postgraduate qualifications in the Arts and Applied Women's Studies. Lesley is a member of the Australian Institute of Management.



## — Paul O'Connor

### Creative Consultant

Paul lectures in Fashion Business at South Metro TAFE, but works primarily for the company WelleCo, managing VIP and international relations.

Paul has exhibited internationally, as well as implementing Public Art Commissions across Western Australia. In 2015, he was invited to join the Art Gallery of Western Australia's Foundation Committee.



## — Sue Girak

Sue Girak is a contemporary artist and teacher interested in the creative reuse of salvaged materials. Sue has completed a PhD, with her research focusing on how upcycling can raise the environmental consciousness of art-makers.

She is one of six artists Australia wide to be invited to take part in the 2018 progressive garment collaboration for Wearable Art Mandurah.





# Wearable Art Mandurah 2019 Categories

The Wearable Art Mandurah competition invites local, national and international artists to create revolutionary works of art on the body for more than \$12,000 in cash and prizes.

## 1. Avant Garde

Think Jean Paul Gaultier meets Lady Gaga! Consider using traditional materials in a non-traditional way. Favour or introduce new experimental ideas and methods. Push the boundaries of what is accepted as the norm or the status quo.

## 2. Tertiary Student

For students registered at universities, TAFE institutions or government approved registered training organisations any time between 1 July 2018 and 30 June 2019. Includes 2018 graduate students.

## 3. Youth

Open to artists 18 years and under, with no themes or boundaries. The brief? To create a revolutionary work of art on the body.

## 4. Movement

Consider movement in a theatrical sense; a moving part of a mechanism; a group of people working together to advance their ideas; a change or development; a principal division of a longer musical work

## 5. A Land Down Under

Embrace the culture, architecture, iconography, people, flora and fauna of this unique part of the world.

The Creative Reuse Award is an overarching award, encompassing all five categories. It encourages the reuse of discarded objects or materials to create a product of higher quality or value than the original. A minimum of 80% repurposed materials is required.

# Important 2019 Competition Dates

### 1 July 2018

Online entries open

### 30 September 2018

Early Bird entries close

### 16 December 2018

All entries close

### 18 February 2019

Deadline to receive photographs of completed garments

For full competition information, visit [wearableartmandurah.com](http://wearableartmandurah.com)







# Acknowledgements

## Creative Team

### Artistic Director

Bernie Bernard

### Production Management

Brock Preston

### Choreographers (Community Cast)

Bernie Bernard

Tash Kennedy (DTX Studios)

Brooke Leeder

Cindylee Godley (Metro Modelling & Dance Academy)

### Lighting Design

Elite Audio Visual Productions -  
Brock Preston

### Video Design and Creative

The Social Beast Collective - Pauly  
Maybury

### Set Design

Tracy Shaw & Brock Preston

### Costume Design (supporting cast)

Deb Hiller

### Live Musicians

Aquila String Band

### Stage Management

Tracey Shaw

### Backstage Manager

Michelle Boylan (Metro)

### Wardrobe Manager

Julie Smith

### Wardrobe Assistants

Till Heike-Woods

Maree Aldred (SM TAFE)

Emily Hansord (SM TAFE)

Maryam Akbari (SM TAFE)

Jenny Carnaje (SM TAFE)

Nathalie Susilo (SM TAFE)

Sonam Yangchen (SM TAFE)

Catherine Kelly (SM TAFE)

Sarah Capper (SM TAFE)

Nelly Fagan (SM TAFE)

Kate Neenan (SM TAFE)

Mikaela Brown (SM TAFE)

### Production Volunteer

Michelle Kite

### Styling Hair and Make-up

Onyx Hair & Beauty Crew

### Presentation Flowers

Kez Wickham St George

### Showcase Program Photography

Stephen Heath Photography

## Wearable Art Mandurah Team

Barb Thoms

Eliya Lucks

Jessica Wright

Elysse Goddard

Jennie Tanti

Mariah Vergone

With special thanks to DTX Studios,  
Metro Modelling & Dance Academy  
and John Curtin College of the Arts.

## Showcase Cast

### Garment Models - Tertiary

Wild Swans -  
Zoe Donaldson

Internal Transparency -  
CindyLee Godley (Metro)

Atrophy of Love -  
Mollie White

Star Power -  
Mia Separovic

Still Standing -  
Cailan Gumina (Metro)

Snowi -  
Alyssa De Yong (Metro)

Forgotten -  
Libby Tavener (Metro)

Forty Four -  
Madeline Clement (Metro)

Frame Perspective -  
Hannah Goncalbes (Metro)

### Garment Models - Avant Garde

The Butterfly Collector -  
Paris Cusack (Metro)

Are you Thirsty? -  
Jemma Crump

The Masquerade -  
Elysse Ralph (Metro)

Time Travel -  
Georgia Kelly (Metro)

Mulier Woman -  
Olivia Webb (Metro)

Light in the Darkness -  
Michaela Hopper (Metro)

It Takes a Village -  
Edyll Ismail

GaiaScope -  
Alice Armistead (DTX)

### Garment Models - Metallic

The Bird Cage -  
Libby Anning (DTX)

Metal Maiden -  
Caitlin Magill

Galactic -  
Brandon Hook (Metro)

Ironland -  
Chelsea Bowden (DTX)

Unbeaten -  
Celeste Winwood (Metro)

LacusCurtivis -  
Amber Williams (DTX)

NetGlitz -  
Emilie Johnstone-Maher (DTX)



## Garment Models - Transformation

The Sorcerer -  
Scott Elstermann

Mirabilia -  
Lilly Watson (DTX)

Deception: A Love Story -  
Allie Wilson (Metro)

Sky and Water III -  
Tash Kennedy (DTX)

Patches Off -  
Stee Andrews

Nature Nurturing -  
Jess Godwin

Takes Grit -  
Jess Sweeney

Evolutionary Woman -  
Claudia Cirillo

## Skrydstrup Woman

**Actor** - Ana Ika

**Director** - Trudy Dunne

## Garment Models - Youth

Plastic Fantastic -  
Kristin McKeand (Metro)

Cloudy with a Chance of Tea-  
Tayah Edwards (DTX)

The Bloom -  
Emma Dixon (DTX)

Life is a Jigsaw -  
Dakotah deRosa (DTX)

Corvus Anxietatem -  
Claudia Alessi

Lupa -  
Ea Sulak

Morphett'e -  
Isabella Pustkuchen

Fabricated to Perfection -  
Altina Cotter (Metro)

## Singers

Cassie Van Lendt

Paris Cusack (Metro)

Shannon White

## Dancers

Kiandra Prestwood

Niahm Horton

Electra Panting

Jaz Fry

Esme Gibson (DTX)

Hannah Leo

Deakin McAlpine

Maddie Hall (DTX)

Caitlin Waring (DTX)

Ayshia Mortimer (DTX)

Tom Leo

Anita Di Vincenzo

Cassandra de Prazer

Ashleigh Winter

Ruby Hart

Georgia Keamy

Amity Scott (Metro)

Emilie Wakelin (Metro)

Logan McShane (Metro)

Jorja von Kelaita (Metro)

Latoya McCabe (Metro)

Millie Moss (Metro)

Tekeiah Scanlin (Metro)

## John Curtin College of the Arts

Emma Acott

Josie Adams

Caleigh Agnew

Victoria Allaway

Alycia De Rossi

Zoe Donaldson

Kate Gibson

Isabella Knight

Chloe Makepeace

Trinity Missen

Caitlin Moore

Molly O'Byrne

Jayde Olsen

Gillian Pinto

Enora Richard

Felicity Short

Isobel Skilton

Mya Wilkin

Mikayla Wilson

## Special Thanks

The Wearable Art Mandurah series of events is made possible through our dedicated volunteers, project coordinators and participants, and we extend thanks to all those involved.

## Major Sponsors



Department of Local Government, Sport and Cultural Industries  
Department of Primary Industries and Regional Development



## Event Sponsors



Copyright City of Mandurah (2018)

**Disclaimer:** Every endeavour has been made to ensure that the details represented in this publication are correct at the time of printing and may be amended due to unforeseen circumstances beyond the control of the organiser. The organiser does not except any liability for loss and limits to the extent possible at law, any loss, damages or inconvenience due to the inaccuracy or changes in the showcase program.

# Get creative for health and happiness

Many people engage in the arts and other creative activities on a daily basis. While we often encourage children to get creative in school and in play, participating in the arts and doing something creative is good for our mental health and wellbeing, no matter what age we are.

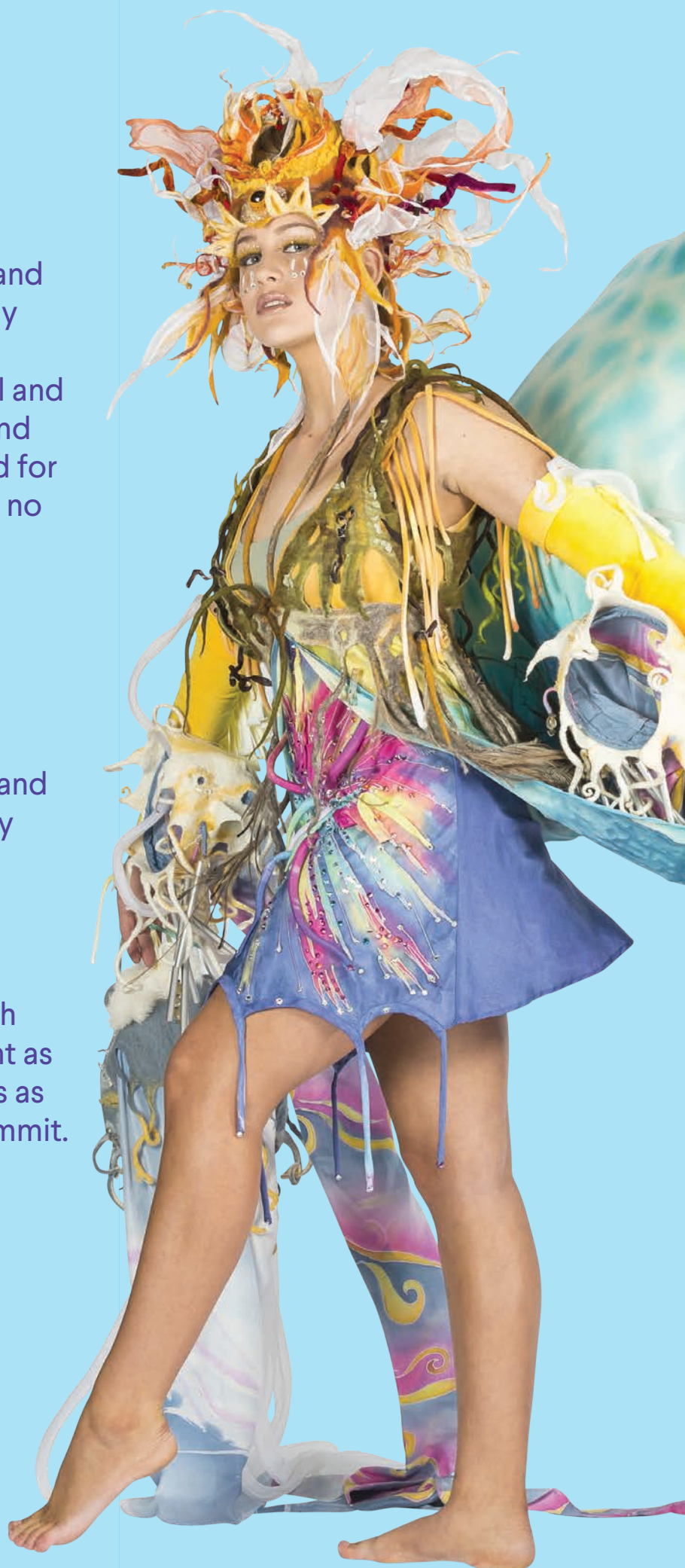
## How can I get more creativity into my life?

You can do something creative, experience something creative, and support other creative people by attending their events.

## It's as simple as A-B-C!

Keeping mentally healthy through being creative is just as important as staying physically healthy and it's as simple as A-B-C: act-belong-commit.

Visit [actbelongcommit.org.au](http://actbelongcommit.org.au)





CASM  
CONTEMPORARY ART SPACES MANDURAH



### **Beyond the Seam: conceptual works in fibre art**

brings together the work of 12 outstanding national and international contemporary artists to explore how fibre art, its materiality and the various processes of making can engage our understanding of the tactile and transformative potential of working with cloth, natural materials and thread.

**Exhibition Dates**  
**26 May – 24 June**

Contemporary Art Spaces Mandurah

## *FASHION & FLORISTRY*

This unique exhibit explores intersections between art, floristry and fashion as South Metropolitan TAFE students collaborate to showcase artisanship on the human form.

**Exhibition Dates**  
**6 – 14 June**

Mandurah Performing Arts Centre, Foyer



## *Wearable Art Mandurah Exhibition*

**presented by Act-Belong-Commit**

These revolutionary works of art need to be viewed up close and personal to appreciate the unusual choice of materials and the level of skill and thinking that sits behind these extraordinary art works.

The exhibition's calendar of events will include guest speakers, panel discussions, a workshop and artist talks.

**Exhibition Opening Event**

**Friday 3 August at 6pm**

**Exhibition Dates**

**3 August – 9 September**

Contemporary Art Spaces Mandurah







**WEAR  
ABLE  
ART**

Mandurah

[wearableartmandurah.com](http://wearableartmandurah.com)